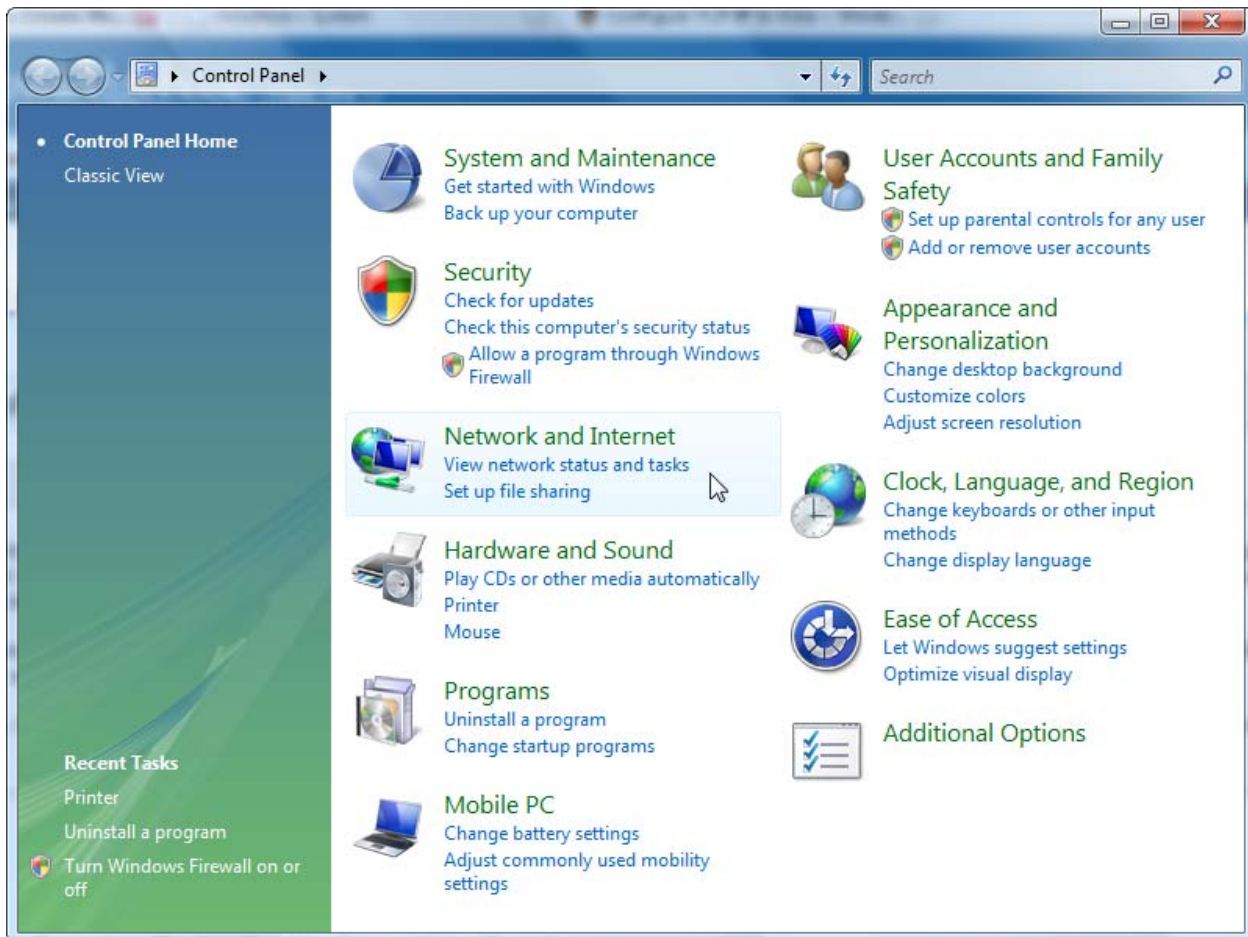


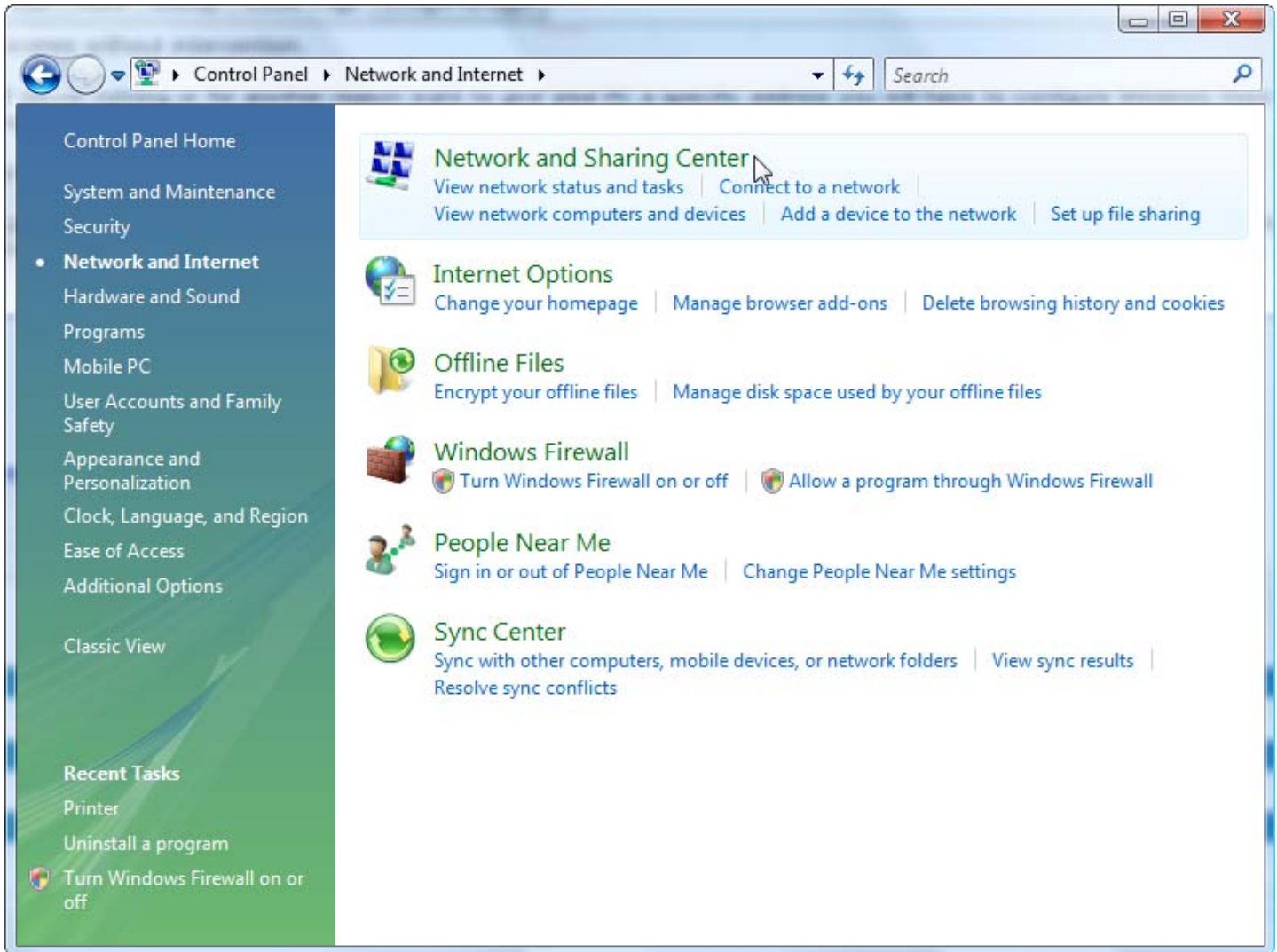
Windows Vista

Assign IP Address(es) to Computer(s)

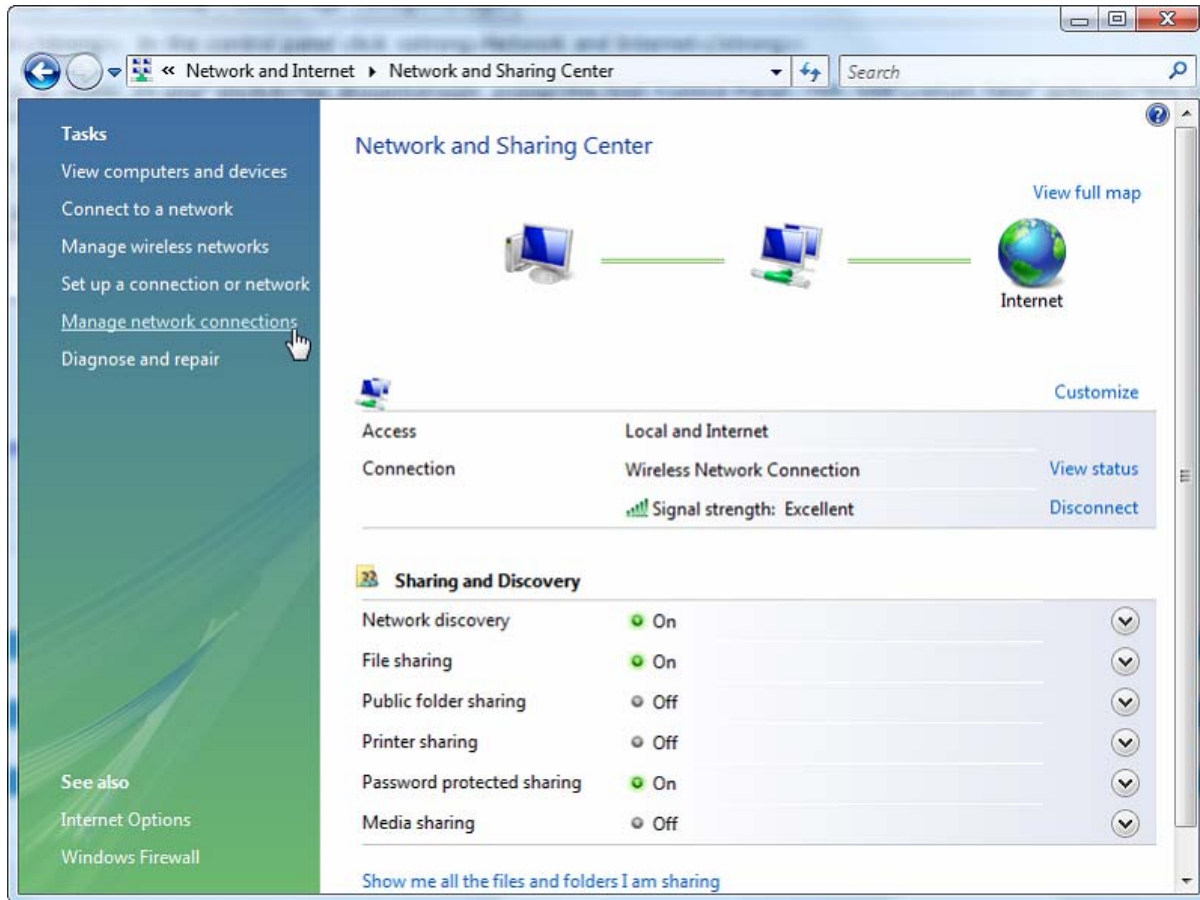
1. Close all open windows and programs.
2. Click the **Start** button, go to **Control Panel**
3. From the **Control Panel**, click **Network and Internet**



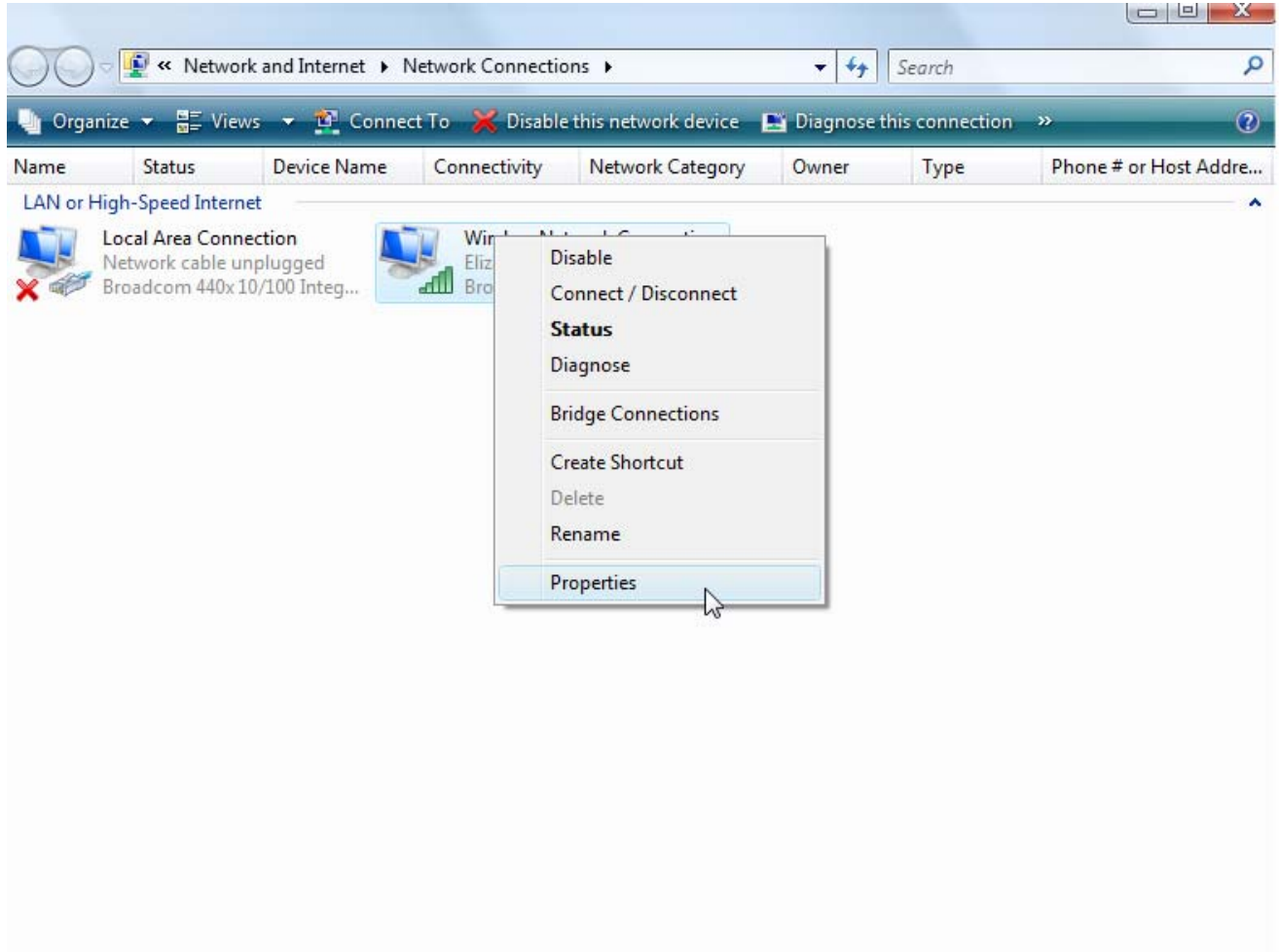
4. Click on **Network and Sharing Center**



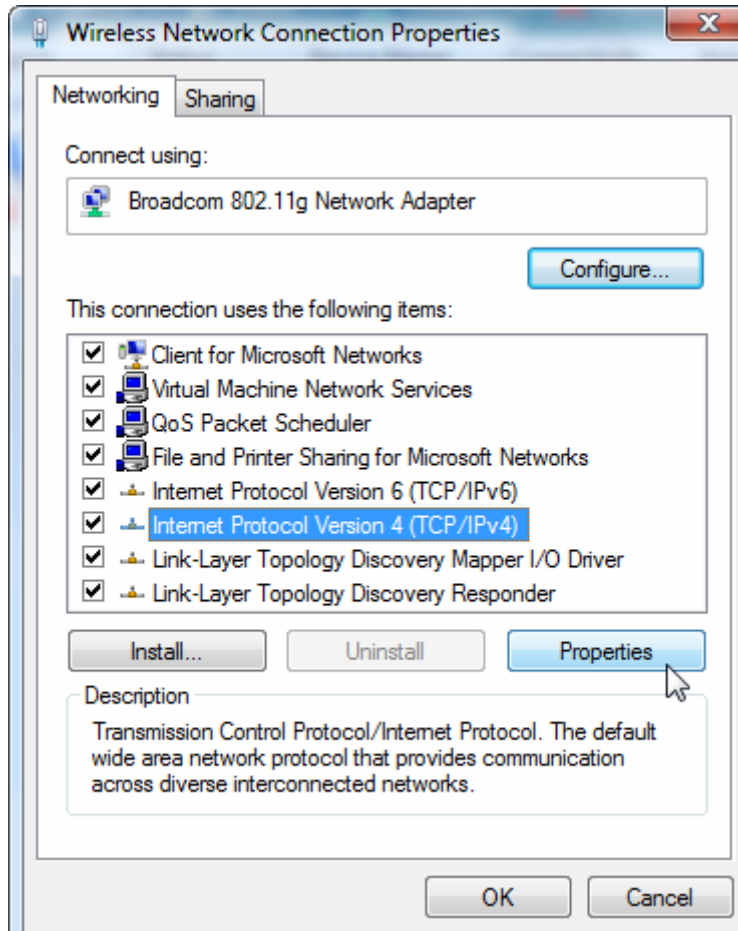
5. On the left pane, click **Manage Network Connections**



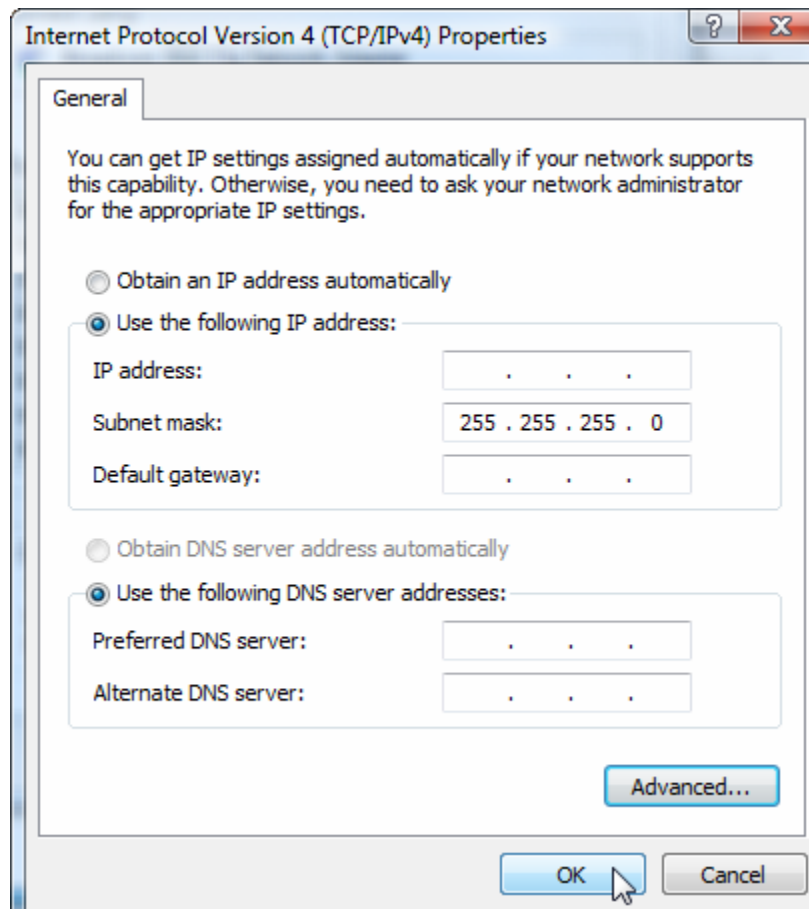
6. **Right click** the Network Adapter you choose to connect with (Local Area Connection or Wireless Network Connection) – if you get a **UAC prompt**, click **Continue**



7. Double click **Internet Protocol Version 4 (TCP/IPv4)**



8. While in the Internet Protocol (TCP/IP) Properties window:
 - Select Use the following IP address
 - Enter in information from **attached sheet**:
 - **IP Address**
 - **Subnet Mask**
 - **Default Gateway**
 - Select Use the following DNS server addresses:
 - Enter in:
 - **Preferred DNS server (Primary DNS Server)**
 - **Alternate DNS server (Secondary DNS Server)**



9. Click **OK** to close the Local Area Connections Properties window

These instructions may also be found on our website: <http://www.integratелеcom.com/ispsupport>

24-Hour Technical Support: 952-226-7097 or 866-871-1114